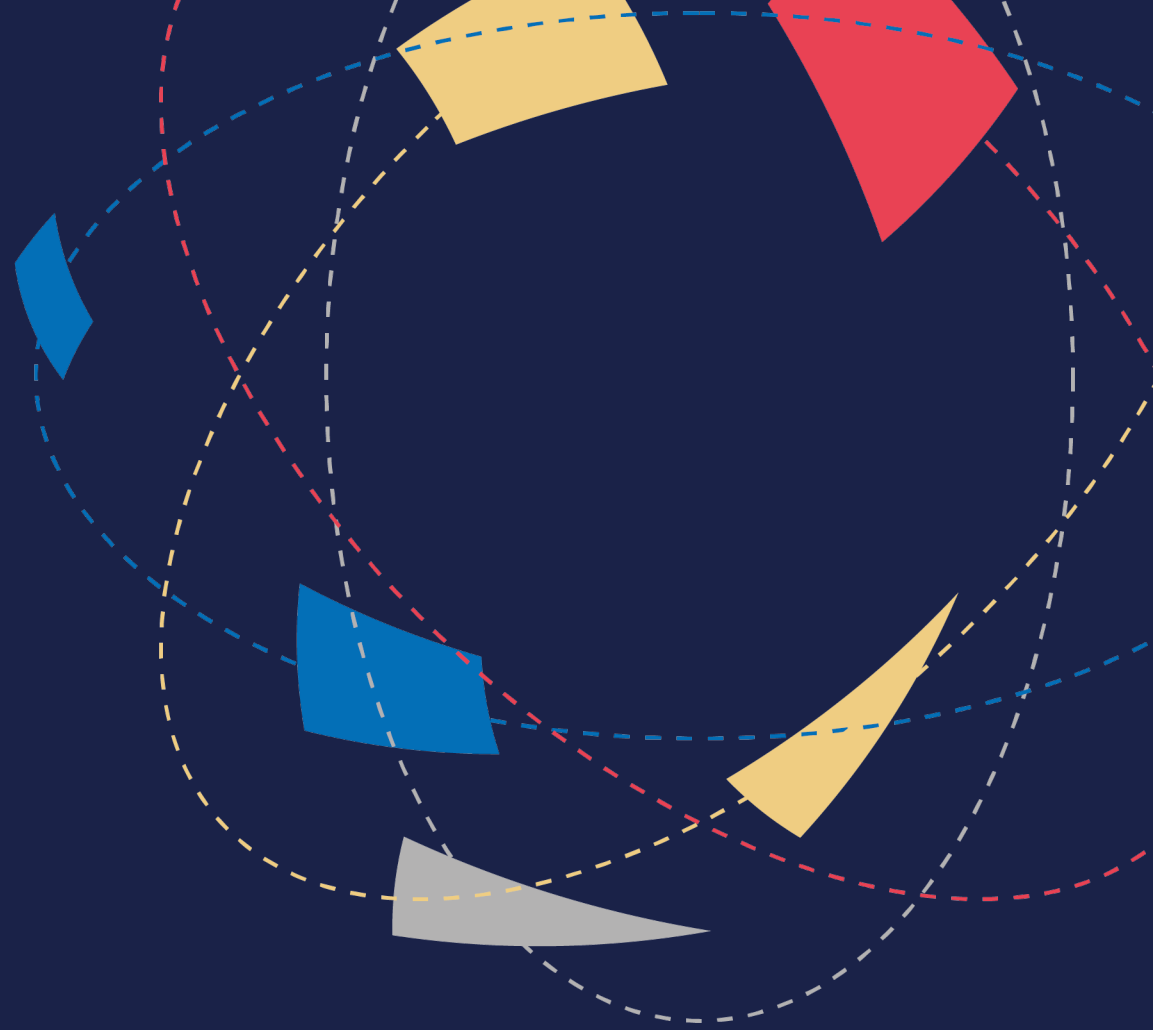


PLATFORM TO SHARE 2025

Welcome!



AI – THE GOOD, THE BAD, AND THE UGLY

ETHICAL CONCERNS

IS AI BIASED?

It depends on the data used to train it.

DATA PRIVACY

Could data be used to train without consent? What data are you putting in it?

ACCOUNTABILITY

If AI provides incorrect responses, who is accountable?

ENVIRONMENTAL

Materials used, electronic waste, high water and electricity usage.

So how is AI problematic for the environment?

Most large-scale AI deployments are housed in data centres, including those operated by cloud service providers. These data centres can take a heavy toll on the planet. The electronics they house rely on a staggering amount of grist: making a 2 kg computer **requires 800 kg** of raw materials. As well, the microchips that power AI need rare earth elements, which are often mined in environmentally destructive ways, noted *Navigating New Horizons*.

The second problem is that data centres produce electronic waste, which often contains hazardous substances, like **mercury** and **lead**.

Third, data centres use water during construction and, once operational, to cool electrical components. Globally, **AI-related infrastructure may soon consume six times more water than Denmark**, a country of 6 million, **according to one estimate**. That is a problem when **a quarter of humanity** already lacks access to clean water and sanitation.

Finally, to power their complex electronics, data centres that host AI technology need a lot of energy, which in most places still comes from the burning of fossil fuels, producing planet-warming greenhouse gases. A request made through ChatGPT, an AI-based virtual assistant, **consumes 10 times the electricity** of a Google Search, reported the International Energy Agency. While global data is sparse, the agency estimates that in the tech hub of Ireland, the rise of AI could see data centres account for **nearly 35 per cent** of the country's energy use by 2026.

Driven in part by the explosion of AI, the number of data centres has surged to 8 million from 500,000 in 2012, and experts expect the technology's demands on the planet to keep growing.

“To train ChatGPT Four, the latest iteration, used **twice** as much electricity as Norwich would use in a year.”



AI – THE GOOD, THE BAD, AND THE UGLY

NEWS

An 'AI' fast food drive-thru is mostly just human workers in the Philippines

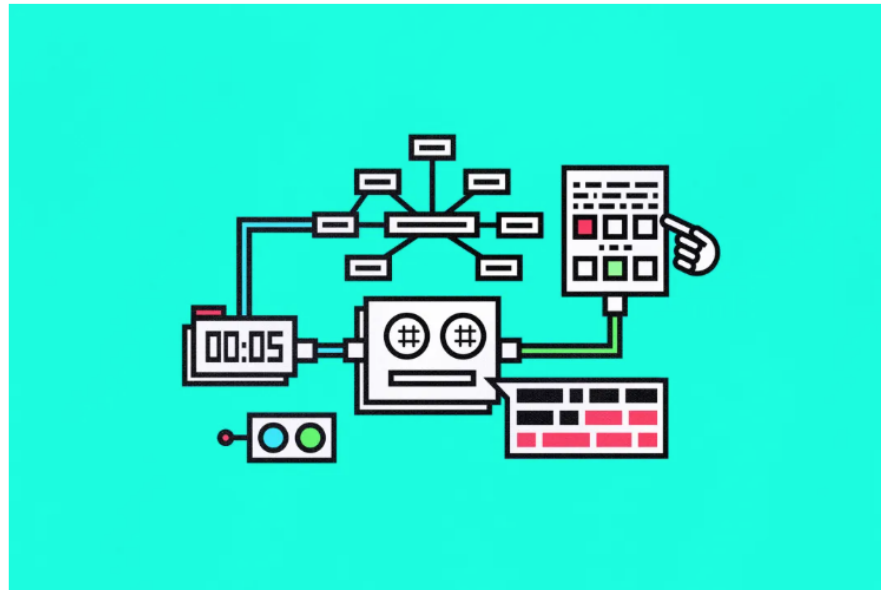


Illustration by Alex Castro / The Verge

/ AI drive-thru company Presto Automation touted its automated ordering technology and has clients at chains like Checkers and Del Taco. But new filings indicate that human labor is powering a majority of orders.

by [Mia Sato](#)

Dec 8, 2023, 3:44 PM GMT



6 Comments (6 New)



IMAGE CREDITS: [ANDREW HARRER / BLOOMBERG](#) / GETTY IMAGES

STARTUPS



Fintech founder charged with fraud after 'AI' shopping app found to be powered by humans in the Philippines

Charles Rollet — 2:42 PM PDT · April 10, 2025



GTIA ISAO

Ann Westerheim posted a new thread to a forum you are watching at [GTIA ISAO](#).

Bad HP Support Number on ChatGPT

We had a community member call us yesterday. They used ChatGPT to look up an HP support phone number to get help with a printer. Similar to fake google ads, the number ChatGPT came back with turned out to be a scam. They got suspicious when the "support person" aggressively wanted to connect to their computer. The funny thing is that after realizing this was a scam, they asked GPT if this support number was a scam and it said "yes". Reminder to check the info ChatGPT presents (as we know, but here's a new one!). This is the first time I've seen a support scam turn up there. Heads up.



+ Follow ...

Ping [Jaroslaw Sygutowicz](mailto:jarek.sygutowicz@authologic.com) <jarek.sygutowicz@authologic.com> for a demo.



Re: Feeling sick

Inbox



Hi [redacted],

Thanks for letting me know. Yes, it's absolutely fine to take a day of paid leave tomorrow—please take the time you need to rest and recover. I hope you feel better soon.

Best,

[redacted]

Would you like a slightly more casual or more formal version?

AI – THE GOOD, THE BAD, AND THE UGLY

PRECISION IN YOUR PROMPTS

TELL YOUR AI WHO IT NEEDS TO BE

Most people just type WHAT they want, without thinking about WHO they want to answer.

"ACT AS A... [IT ENGINEER]"

GIVE YOUR AI CONTEXT

Explain your situation. Let it understand why.

"I'M TRYING TO... [UNDERSTAND THIS PROBLEM]"

BE SPECIFIC

Don't say: "I need a script."

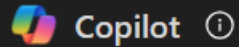
Say: "CREATE... [a PowerShell script that will export the top 10 largest mailboxes in terms of items]"

FORMAT FOR THE FUNCTION

How should AI format your response, so it works for you.

"FORMAT THE OUTPUT AS... [A table with these headings...]"

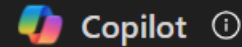
What is the best method of travel in Norwich?



Norwich offers several convenient travel options:

1. **Walking:** The city center is compact and walkable, making it easy to explore on foot. Many of the main attractions, like Norwich Cathedral and Elm Hill, are within walking distance of each other [1].
2. **Bus:** Norwich has an extensive bus network, including Park & Ride services, which are great for getting around the city and surrounding areas [2].
3. **Train:** If you're traveling from other parts of the UK, the train is a quick and efficient option. Norwich railway station is well-connected, with regular services to and from London, Cambridge, and other major cities [2].
4. **Cycling:** Norwich is becoming more cycle-friendly, with dedicated bike lanes and cycle paths. It's a great way to see the city and stay active.
5. **Car:** If you prefer driving, there are plenty of car parks in the city. However, traffic can be heavy during peak times, so plan accordingly [2].

What is the best method of travel in Norwich?



Norwich offers several convenient travel options depending on your preferences:

1. **Walking:** Norwich is a compact city with many attractions within walking distance. Exploring on foot allows you to enjoy the historic streets and landmarks like Norwich Cathedral and Elm Hill [1].
2. **Bus:** The city has a reliable bus network, including Park & Ride services, which are great for avoiding city center parking [2].
3. **Train:** Norwich railway station connects to major cities like London, making it a convenient option for longer trips [2].
4. **Car:** If you prefer driving, there are several car parks and Park & Ride sites available [2].

Which mode of travel do you prefer?

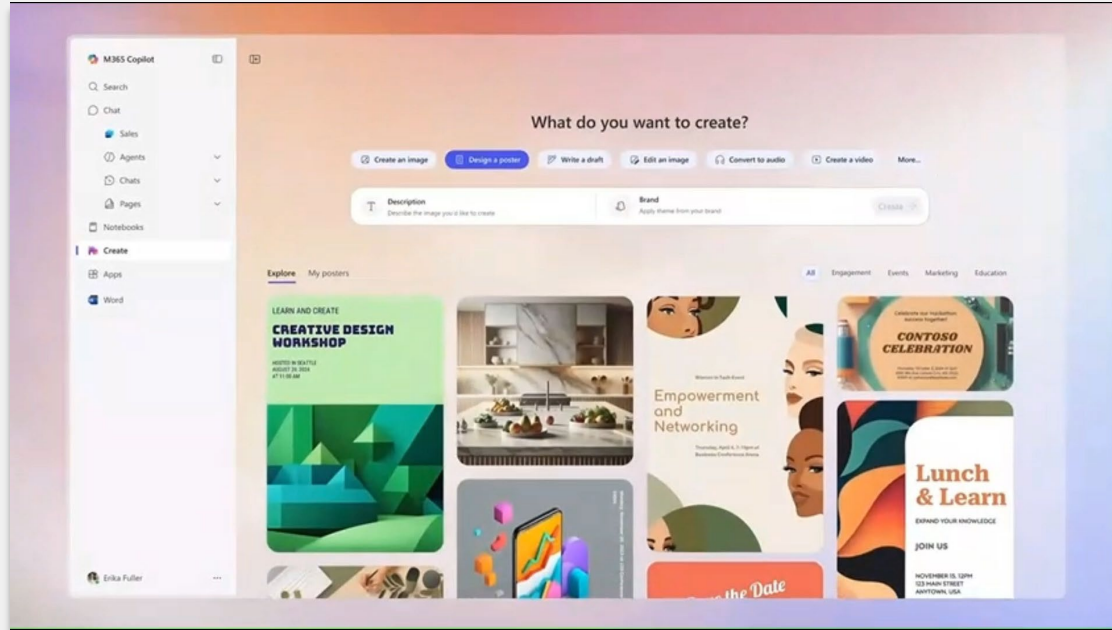
COPilot IN WINDOWS VS COPilot FOR MICROSOFT 365

IN WINDOWS	FOR MICROSOFT 365
FREE to use	£277.20 Per user, per year OR £24.26 Per user, per month Both with an annual commitment
Uses publicly available data	Uses workplace data
Not integrated in 365 apps	Integrated in 365 apps

USEFUL FEATURES

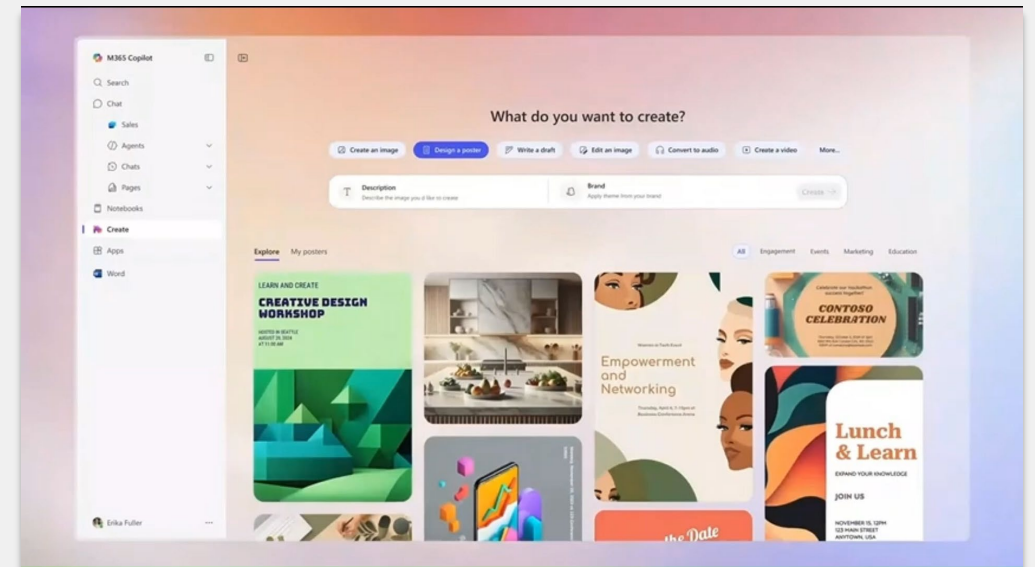
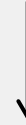
(Copilot for Microsoft 365)

Content Generation

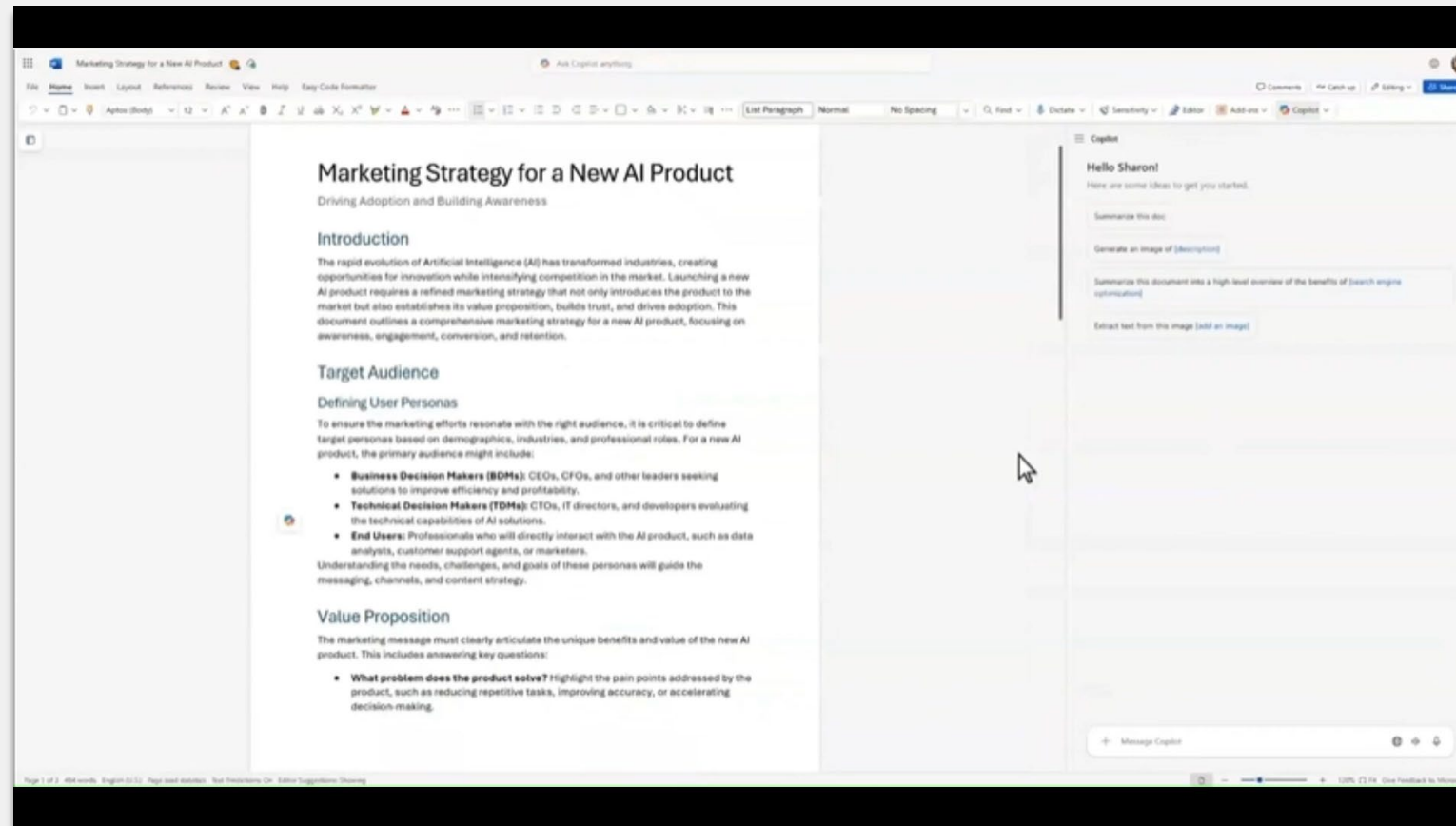


Released May 2025.

- Images
- Posters
- Copy
- Edit Images
- Videos



Real-time, voice-powered conversations with Copilot in Word



Schedule Prompts

Schedule this prompt

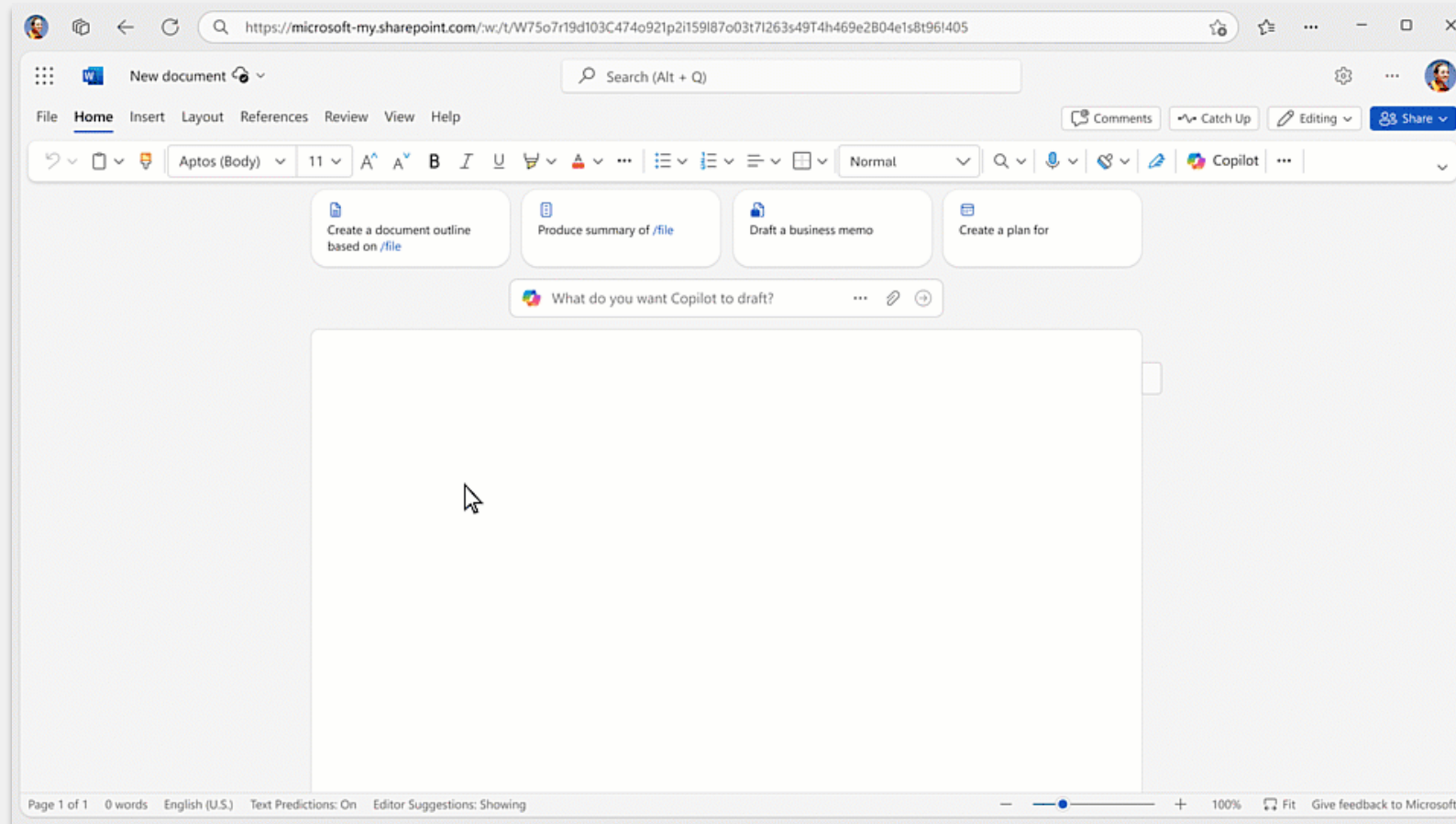


Summarize Teams messages where I have been mentioned this week

Referencing Folders in Prompts

Referencing in prompts can now include:

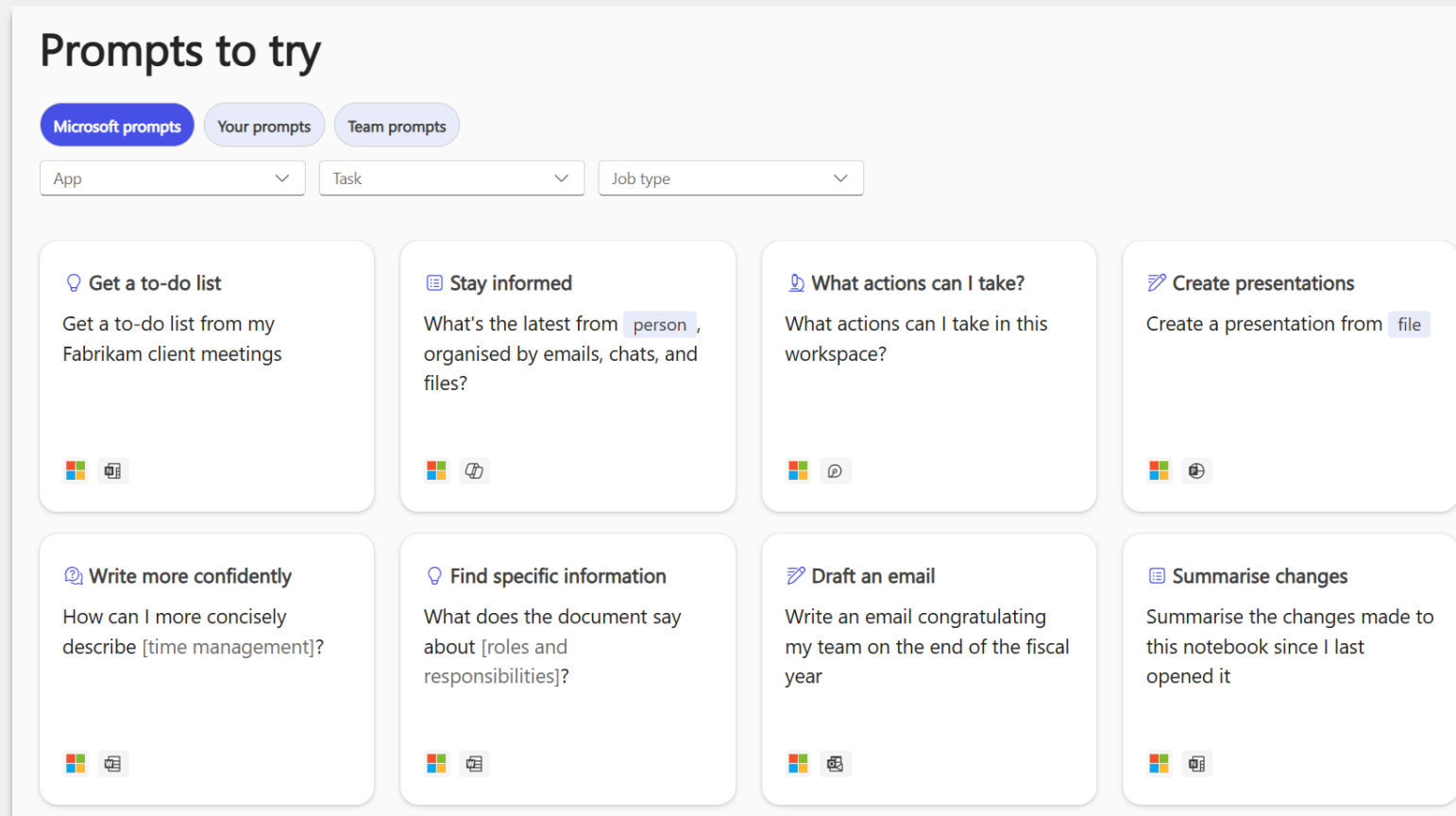
- An entire folder
- Up to 20 individual files
- Documents up to 1,500,000 words or 3,000 pages



Prompt Gallery

Includes:

- Microsoft prompts
- Your saved prompts
- Company-wide prompts



AI in Your Workplace

75%

Of employees are
using AI already

60%

Of companies lack
a plan and vision
to implement it

AI – POLICY

Key Things to Include:

- **Data Handling**
Restrict certain data being entered into AI engines.
- **AI Tools**
An approved list of AI tools that can be used.
Any restrictions on what AI tools can't be used for.
- **Training and Awareness**
Regular training on data security and AI.
- **Monitoring and Compliance**
Monitoring AI tool usage, audits to check compliance.
- **Business Specific**

THANK YOU!

